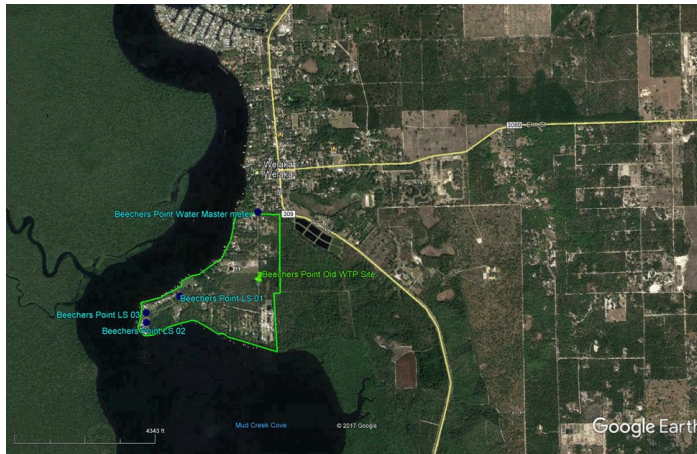

BEECHER'S POINT SERVICE AREA



Beecher's Point is a water and wastewater system. At Beecher's Point, FGUA serves approximately 52 water and 19 wastewater customers.

Water System Summary

Beecher's Point is interconnected for water with the Town of Welaka. Beecher's Point receives treated finished water and does not re-treat the water before supplying to customers. The system receives water per an agreement that was executed in 2007 for a period of ten (10) years with automatic renewals for ten (10) year terms. The water flows are not to exceed 25,000 gallons per day. The Town of Welaka treats water using hypo-chlorination and aeration.

Water System Components

The water distribution system consists of the following-

- 8,350 LF of 2-inch pipe
- 1,060 LF of 3-inch pipe
- 1,060 LF of 4-inch pipe
- 1,243 LF of 6-inch pipe
- 0 fire hydrants

Wastewater System Summary

BEECHER'S POINT is interconnected for wastewater with the Town of Welaka. The Town of Welaka entered into an agreement with the previous owner to provide wastewater treatment in 2007 for a period of ten (10) years with automatic renewals for ten (10) year terms. The monthly flows are not to exceed 430,000 gallons per month.

Wastewater System Components

The wastewater collection system consists of the following-

- 2,377 LF of 8-inch Gravity main
 - 1,615 LF of Force Main pipe
 - Two (2) Lift Stations
 - Five (5) Manholes
-