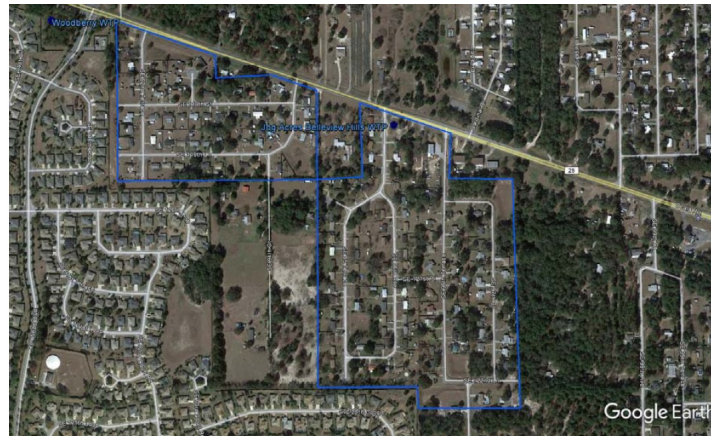

BELLEVIEW HILLS & WOODBERRY FOREST SERVICE AREA



Belleview Hills (Jog Acres) & Woodberry Forest are water-only systems. The Belleview Hills system is located at the SE corner of Ocala Road CR 25 and SE 95th Terrace. The system is interconnected to the City of Ocala and the WTP was disconnected in April 2016. FGUA serves approximately 109 water customers.

The Woodberry Forest system is located at SE corner of Ocala Rd CR 25 and Del Webb Blvd. The system is interconnected to the City of Ocala and the WTP was disconnected in April 2016. FGUA serves approximately 54 water customers.

Water System Components—Belleview Hills (Jog Acres)

Distribution system has approximately—

- 10,100 LF of 4 inch PVC pipe
- 1,250 LF of 3 inch PVC pipe
- 330 LF of 2 inch PVC pipe
- 145 LF of 2 inch PVC pipe
- 0 fire hydrants
- One Emergency 35KW Propane Generator
- One (1) 3,000 gallon hydro-pneumatic tank which was inspected in June 2015. This tank will be moved to serve as a replacement elsewhere in FGUA as required once the WTP is demolished by Marion County Utilities (MCU).
- The two (2) well pumps were removed and the wells were abandoned in April 2016.
- The emergency generator will be moved to a suitable location elsewhere in FGUA once the WTP is demolished by MCU.

Water System Components—Woodberry Forest

Distribution system has approximately -

- 4,050 LF of 4 inch and 2 inch (combined) PVC pipe
 - 0 fire hydrants
 - One Emergency Propane Generator
 - One (1) 3,000 gallon hydro-pneumatic tank which was previously determined to be in need of replacement. The tank will be offered to a salvage contractor.
 - The one (1) well pump was removed and the well was abandoned in April 2016.
 - The emergency generator will be moved to a suitable location elsewhere in FGUA once the WTP is demolished by MCU.
-