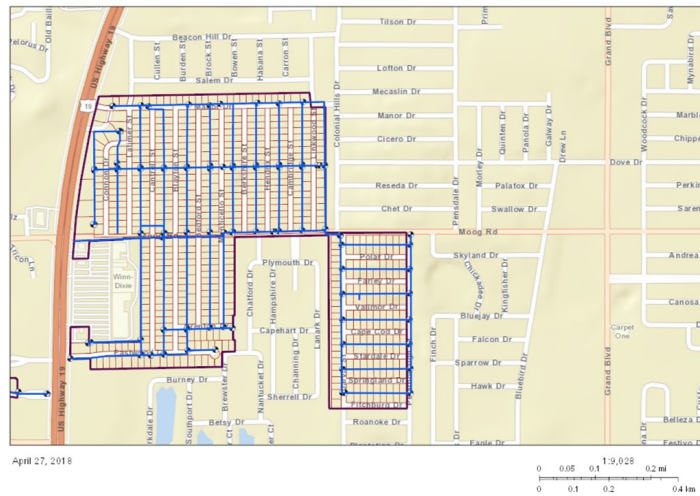

COLONIAL MANOR SERVICE AREA



Colonial Manor is a water only system, located 1 mile southwest of Elfers, 0.5 miles east of US Hwy 19 at New Port Richey. The FGUA serves approximately 710 water customers.

Water System Summary

Colonial Manor is a consecutive system. The service area is interconnected with Pasco County Utilities water distribution system. The three treatment plants were dismantled, and the wells were abandoned.

Water System Components

Combined treatment and distribution system consists of approximately the following:

- One (1) 6 inch Interconnect at Moog Road
 - 815 LF of 8-inch pipe
 - 6,240 LF of 6-inch pipe
 - 8,555 LF of 4-inch pipe
 - 20,040 LF of 2-inch pipe
 - One (1) 6-inch compound meter, at interconnect
 - One (1) fire hydrant
-