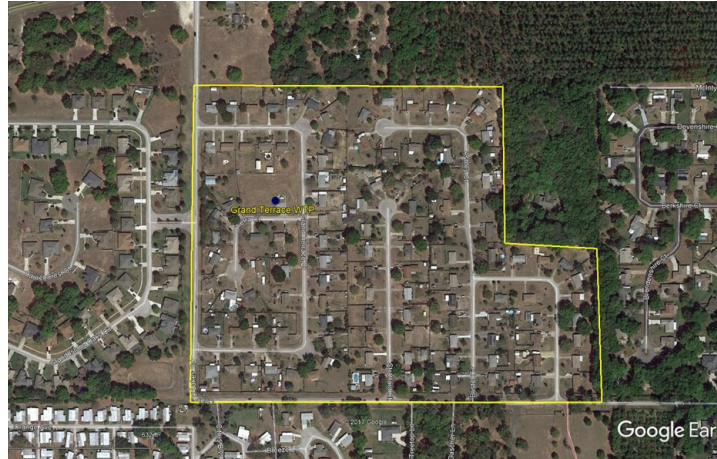


---

## GRAND TERRACE SERVICE AREA



**Grand Terrace** is a water only system. The water treatment plant (WTP) is located at the corner of Terra Court and Grand Terrace Drive, approximately 3 ½ miles northwest of Eustis. At Grand Terrace, the FGUA serves approximately 112 water customers.

### Water System Summary

The Grand Terrace water treatment plant is a Category V Class D facility and has a permitted capacity of 40,900 GPD on an annual average daily flow basis. The treatment plant is permitted by the Florida Department of Environmental Protection (FDEP). It has a consumptive use permit from the St Johns River Management District.

### Water System Components

The distribution system consists of the following-

- 350 LF of 4-inch pipe
  - 7,556 LF of 6-inch pipe
  - 500 LF of 8-inch pipe
  - 12 fire hydrants
  - One (1) public supply well, with 30 HP submersible pump
  - 6,000 gallon hydro-pneumatic tank
  - Chlorine disinfection system
  - Phosphate treatment system
-