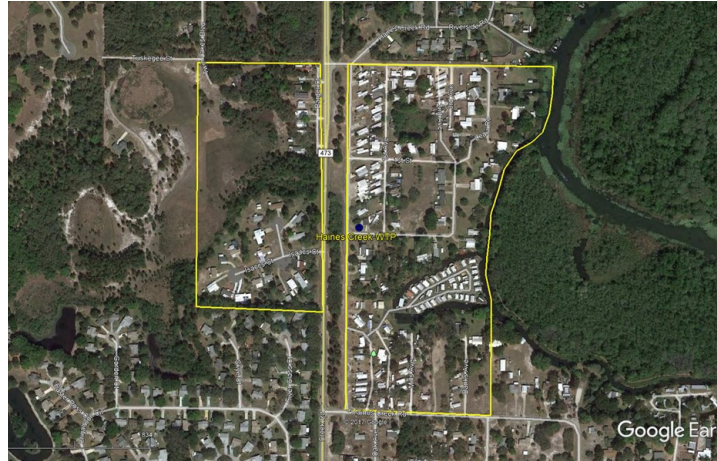


---

## HAINES CREEK SERVICE AREA



**Haines Creek** is a water only system. The water treatment plant (WTP) is located at the corner of Haines Creek Road and Learn Road approximately seven (7) miles northeast of Leesburg. At Haines Creek, the FGUA serves approximately 108 water customers.

### Water System Summary

The Haines Creek water treatment plant is a Category V Class D facility and has a permitted capacity of 6,164 GPD on an annual average daily flow basis. The treatment plant is permitted by the Florida Department of Environmental Protection (FDEP). It has a consumptive use permit from the St Johns River Management District.

### Water System Components

The distribution system consists of the following-

- 476 LF of 1.25-inch pipe
  - 934 LF of 1.5-inch pipe
  - 6,092 LF of 2-inch pipe
  - 1 fire hydrants
  - One (1) public supply well, with a 5 HP submersible pump.
  - 1,500 gallon hydro-pneumatic tank
  - Chlorine disinfection system
  - One (1) emergency generator, LP Gas powered, 20 KW, 3 pH, 230 Volts
-