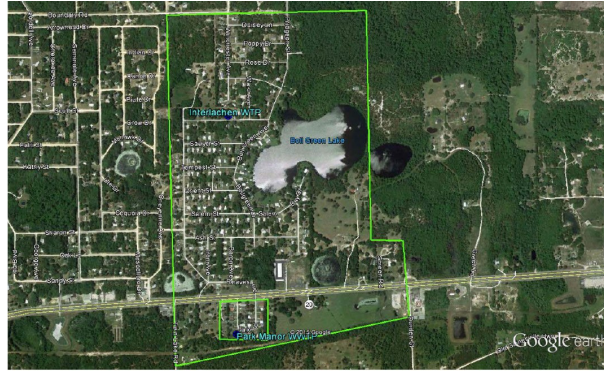

INTERLACHEN & PARK MANOR SERVICE AREA



Interlachen is a water only system while **Park Manor** is wastewater and water system. The water to Park Manor service area is served through an interconnect from Interlachen WTP. These systems are located on the north and south sides of SR 20, in Interlachen, Florida, approximately 12.75 Miles west of the City of Palatka, FL. The Interlachen WTP is located at 118 Velvet Street, ½ mile north of SR 20 and the Park Manor WWTP is located at 117 Park Road, Interlachen, FL. FGUA serves approximately 226 water customers in Interlachen and Park Manor approximately 48 wastewater customers at Park Manor.

Water System Summary

The Interlachen WTP is a Category V Class D Facility. The plant has a permitted capacity of 56,438 GPD.

Water System Components

The distribution system consists of -

- 16,050 LF of 2 inch PVC pipe
- 7,500 LF of 3 inch PVC pipe
- 4,239 LF of 4 inch PVC Pipe
- 0 fire hydrants.
- One (1) 120/240 Volt 45 KW Generac generator set
- One (1) public supply well with vertical turbine well pump
- One (1) public supply well with submersible well pump
- Two (2) 7.5 HP high service pumps
- Water is disinfected by liquid chlorination before it enters the hydro-pneumatic tank
- One (1) 20,000 gallon ground storage tank
- One (1) 5,000 gallon hydro-pneumatic tank.

Wastewater System Summary

The Park Manor WWTP is a Category III Class D Facility. The plant has a permitted capacity of 15,000 GPD AADF. It is an extended aeration secondary domestic waste water treatment facility.

Wastewater System Components

Collection system has approximately -

- 1,363 LF of 8 inch PVC gravity main
 - Four (4) manholes
 - Three (3) aeration tanks
 - One (1) clarifier
 - One (1) digester
 - One (1) chlorine contact chamber
 - Two (2) blowers
 - Liquid chlorination for disinfection.
 - Two (2) rapid infiltration basins
-