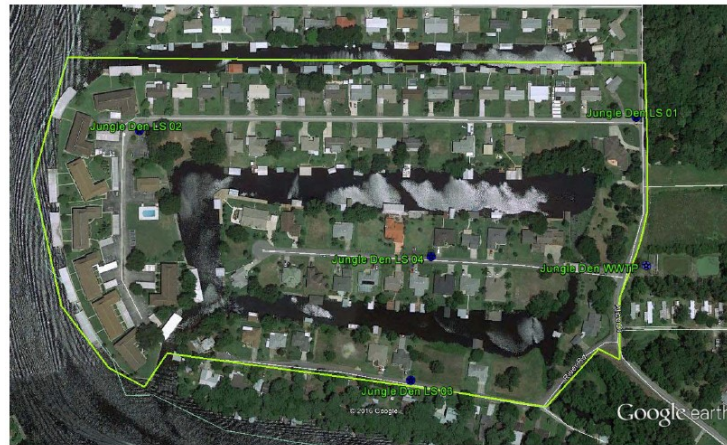


---

## JUNGLE DEN SERVICE AREA



**Jungle Den** is located approximately 0.4 miles north of SR 40 at the corner of Alice Drive and Yellow Brick Road. Jungle Den is a water and wastewater system serving approximately 143 customers.

### Water System Summary

The Jungle Den Water System is a consecutive system which purchases all of its water from St. John's River Utility. The St. John's River Utility's treatment process includes chloramines, aeration and poly-phosphate for corrosion control.

### Water System Components

Distribution system has approximately

- 2,217 LF of 4 inch pipe
- 0 fire hydrants

### Wastewater System Summary

The Jungle Den WWTP is a Category III Class D extended aeration facility. The plant has a permitted capacity of 0.021 MGD (21,000 Gallons per day) The plant has remained within the permitted capacity. The plant permit expires in October 2025.

### Wastewater System Components

- One (1) aeration chamber
  - One (1) clarifier
  - One (1) digester
  - One (1) chlorine contact chamber
  - Two (2) blowers
  - Liquid chlorination for disinfection
  - Two (2) holding ponds
  - One (1) effluent pumping station with two (2) VT pumps
  - Four (4) lift stations with gravity lines and force mains
-