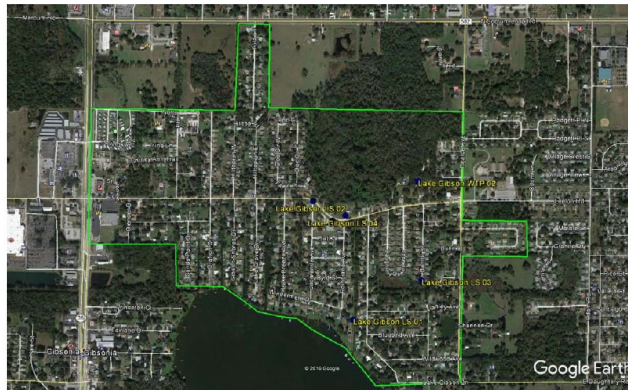

LAKE GIBSON SERVICE AREA



Lake Gibson has two water treatment plants (WTP). Plant # 1 is located on Daugherty Rd. between Jacaranda Ave. and Poinciana Ave. and Plant # 2 is located north of Daugherty Rd. across Bambi Drive, approximately one (1) mile east of the junction of SR 98 and West Daugherty Rd. The FGUA provides both water and sewer service, serving approximately 1,180 customers.

Water System Summary

The Lake Gibson system has two water treatment plants; each plant has one (1) well pump that pumps into a 10,000 gallon Hydro-pneumatic tank. The plants are Category V Class C permitted by the FDEP ID # 6532347. The plants are permitted for 243,400 GPD AADF with a peak of 311,600 GPD average daily flows during the highest water use month.

Water System Components

Distribution system has approximately -

- 806 LF of 8 inch pipe
- 7,915 LF of 6 inch pipe
- 12,508 LF of 4 inch pipe
- 11,206 LF of 3 inch pipe
- 18,734 LF of 2 inch pipe
- 12 fire hydrants.
- One 60 KW Generac diesel driven generator set
- Two (2) VT public supply well pumps
- Water is disinfected by liquid chlorination before it enters the hydro-pneumatic tank
- Two (2) 10,000 gallon hydro-pneumatic tanks.

Wastewater System Summary

Lake Gibson wastewater system is a consecutive system that purchases treatment from Polk County. Wastewater is conveyed through an interconnect with Polk County Utilities for treatment.

Wastewater System Components

Collection system has approximately

- 15,934 LF of gravity mains
 - 11,952 LF of force mains
 - Five (5) Lift stations
 - 56 Manholes
-