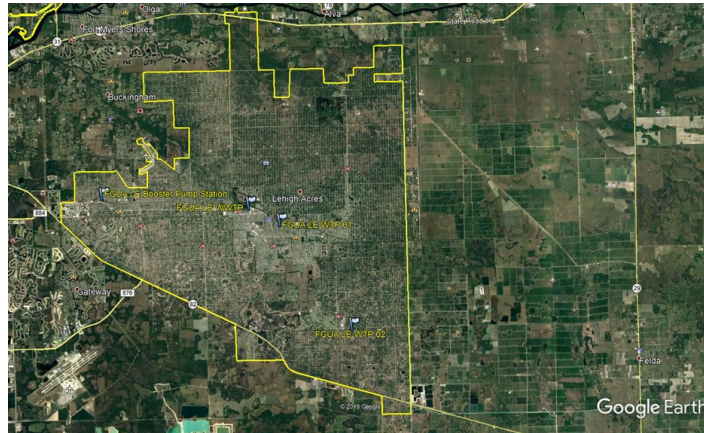

LEHIGH ACRES SERVICE AREA



Lehigh Acres is located approximately 3 miles east of Interstate I-75 at Exit 138. FGUA serves approximately 12,620 water customers and 10,420 wastewater customers.

Wastewater System Summary

The water service area is interconnected with Fort Myers water distribution system, this interconnect serves as a back-up. Lehigh Acres has one (1) treatment plant and two (2) booster pump stations. Lehigh Acres water use permitted at 3.15 MGD by SFWMD. WTP design capacity is 3.1 MGD

Water System Components at Treatment Plant at 305 Coolidge Avenue, Lehigh Acres, FL

Combined treatment and distribution system consists of approximately the following:

- One (1) 1,000,000 gallon ground storage tank
- One (1) 500,000 gallon ground storage tank
- One (1) 250,000 gallon overhead storage tank
- 1,149,000 LF of water mains (sizes vary from 2 inch to 24 inch)
- Twelve (12) Gravity filters
- One (1) Lime softening system
- Chloramine disinfection system
- Ortho phosphate system for corrosion inhibition
- Six (6) High service pumps
- Three (3) Public well pumps at Coolidge Ave WTP
- Ten (10) Public wells and pumps dispersed in the service area
- Thirteen (13) Flow meters
- One (1) 400 KW Diesel fired Generator at WTP
- One thousand and ninety five (1,095) fire hydrants

Water System Components at Booster Pump Station at 5190 Lee Blvd., Lehigh Acres, FL

The Booster Pump Station consists of approximately the following:

- One (1) 16 inch Interconnect with City of Fort Myers at intersection of Colonial Blvd and Lee Blvd.
 - One (1) 500,000 gallon Ground Storage Tank
 - One (1) Chloramine dis-infection system
 - Four (4) High service pumps
 - Two (2) Flow meters
 - One (1) 150 kW Diesel fired Generator at Booster pump station
-

Wastewater System Summary

The Wastewater plant is located at 305 Construction Lane, Lehigh Acres, FL, the facility has a permitted capacity of 3.0 MGD on an Annual Average Daily Flow (AADF) and 4.3 MGD on a Three-Month Average Daily Flow basis.

Wastewater System Components and Collection System has approximately -

- Three (3) 1.125 MGD Circular Contact Stabilization treatment units
 - One (1) Manual bar screen
 - One (1) 500,000 gallons equalization tank
 - Four (4) 576 Sq. Ft. travelling bridge filters
 - Two (2) 59,300 gallons chlorine contact basins
 - Four (4) sludge drying beds total area 7,000 Sq. Ft
 - One (1) MGD Reuse water storage tank
 - Unit # 01 (Contact Stabilization)
 - One (1) contact stabilization units 123,000 gallons
 - One (1) 318,000 gallon aeration zone
 - Unit # 03 (Contact Stabilization)
 - One (1) contact stabilization units 107,000 gallons
 - One (1) 250,000 gallon aeration zone
 - One (1) 2,100 Sq. Ft. Clarifier
 - One (1) 224,000 gallon aerobic digester
 - Unit # 04 (Contact Stabilization)
 - One (1) 125,000 gallon Contact zone
 - One (1) 250,000 gallon aeration zone
 - One 2,500 Sq. Ft. Clarifier
 - One (1) 280,000 gallon aerobic digester
 - 566,000 LF of 8 inch Gravity Mains
 - 260,400 LF of Force Main pipe sizes vary from 2 inch to 30 inch
 - 2,295 Manholes
 - Two (2) 1500 KW and 500 KW Diesel fired Generators stationary
 - Two (2) 80 KW and 70 KW Diesel fired portable generators
 - One (1) 18.6 MGD design capacity deep Injection well system
 - Two (2) Deep Injection monitoring wells
 - Twenty two hundred (2,200) Manholes
 - Sixty Five (65) Lift stations
-