

---

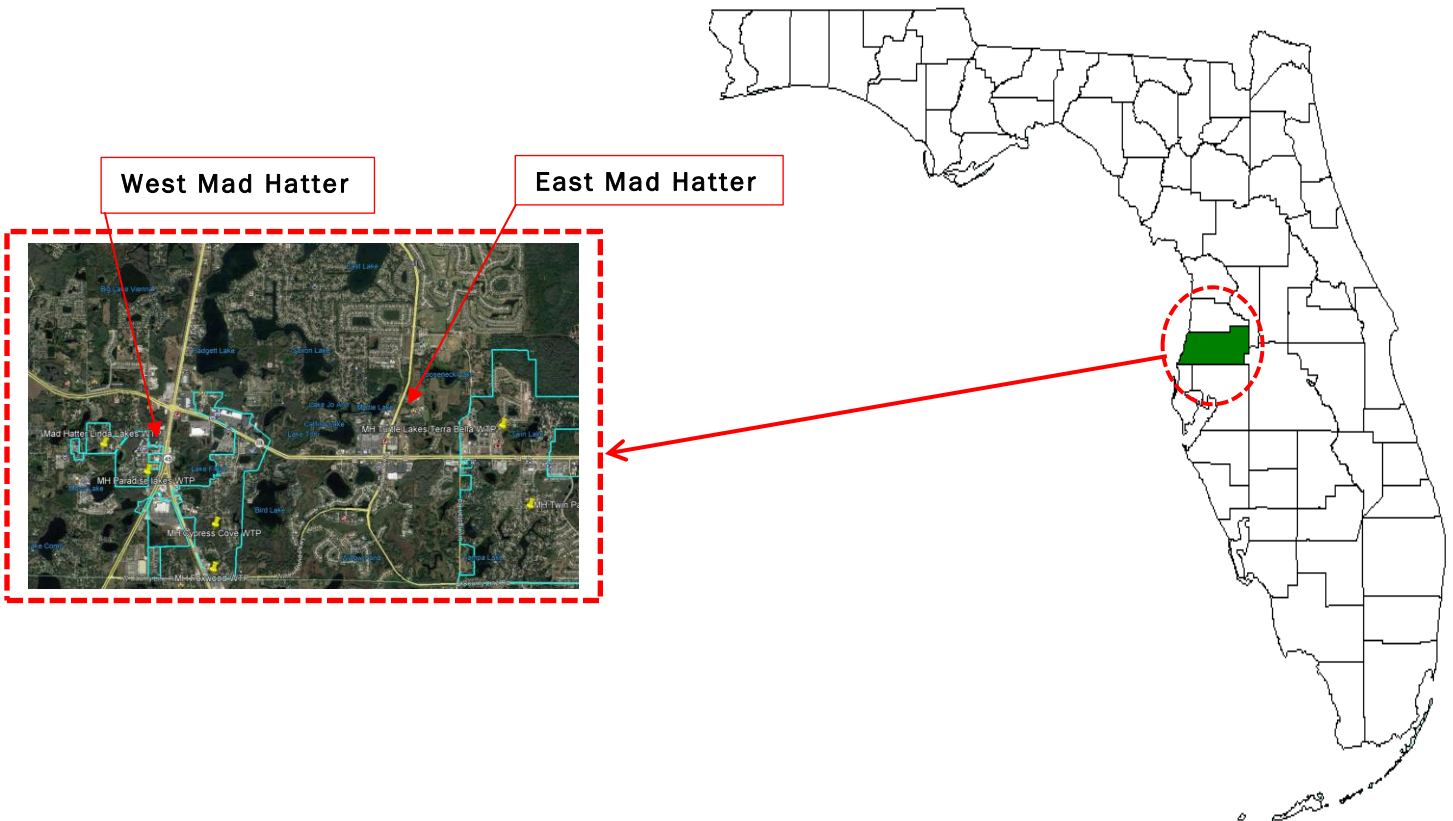
## MAD HATTER SERVICE AREA

The Mad Hatter system which is divided into East and West systems.

**East Mad Hatter** consists of Twin Palms, Carpenter's Run and Turtle Lakes a.k.a. Terra Bella service areas.

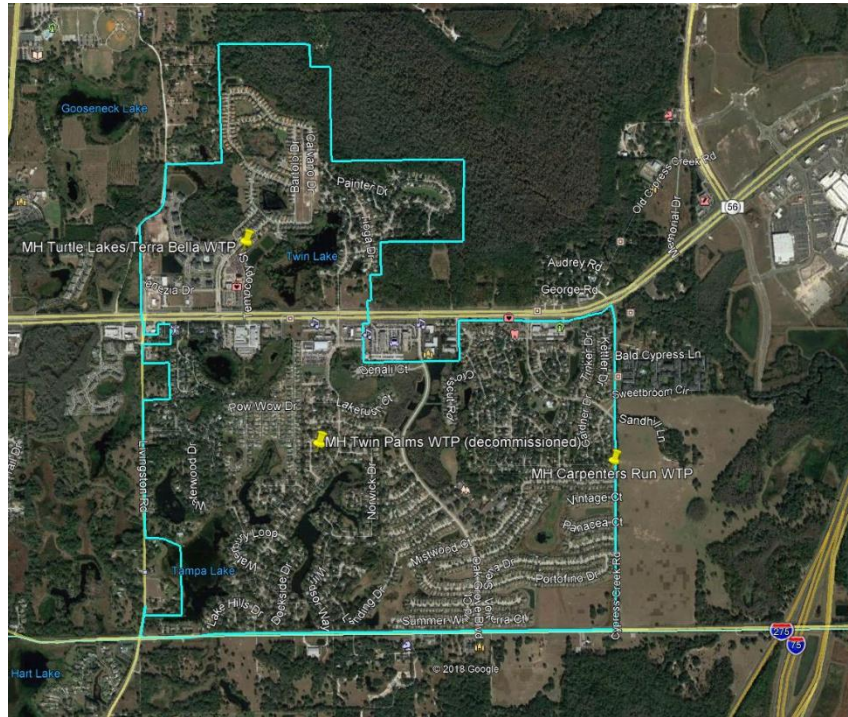
**West Mad Hatter** consists of Linda Lakes, Paradise Lakes, Cypress Cove and Foxwood service areas.

In Mad Hatter, FGUA serves approximately 3,363 water customers and 3,337 wastewater customers.



---

## EAST MAD HATTER SERVICE AREA



### EAST MAD HATTER Water System Summary

TWIN PALMS is a water only system and the water treatment plant was de-commissioned in mid-2015 and interconnected to the Carpenter's Run system. The treatment plant was dismantled, and the wells were abandoned.

CARPENTER'S RUN and TURTLE LAKES a.k.a. TERRA BELLA are water-only systems. The water treatment plants' combined treatment capacity is permitted for 7,597,000 GPD on an average annual daily flow (AADF) basis. Both the water treatment plants are Category V Class C plants.

### Water System Components (CARPENTER'S RUN)

The system is located at 1501 Cypress Creek Road, Land O' Lakes, Florida.

Combined supply, treatment and distribution system consists of approximately the following:

- Two (2) public potable water supply wells
  - Two (2) 60 HP Vertical Turbine public supply pumps
  - Two (2) Hydro-pneumatic tanks 10,000 gallons each
  - Two Flow meters at each well
  - Two Booster pumps
  - One (1) Portable compressor
  - One Generator
  - One (1) 6-inch compound meter, at interconnect
  - Fifty-one (51) fire hydrants
-

---

## Water System Components (TURTLE LAKES a.k.a. TERRA BELLA)

The system is located at 23731 SR 54, Land O' Lakes, Florida.

Combined supply, treatment and distribution system consists of approximately the following:

- Two (2) public potable water supply wells
- Two (2) 60 HP and 40 HP Submersible public supply pumps
- One (1) Hydro-pneumatic tank, 20,000 gallons
- Two (2) Flow meters at each well
- One (1) Generator, Diesel fuel
- Reclaim water lines
- Ninety-Three (93) fire hydrants
- Phosphate treatment for corrosion control
- Chlorination system for disinfection

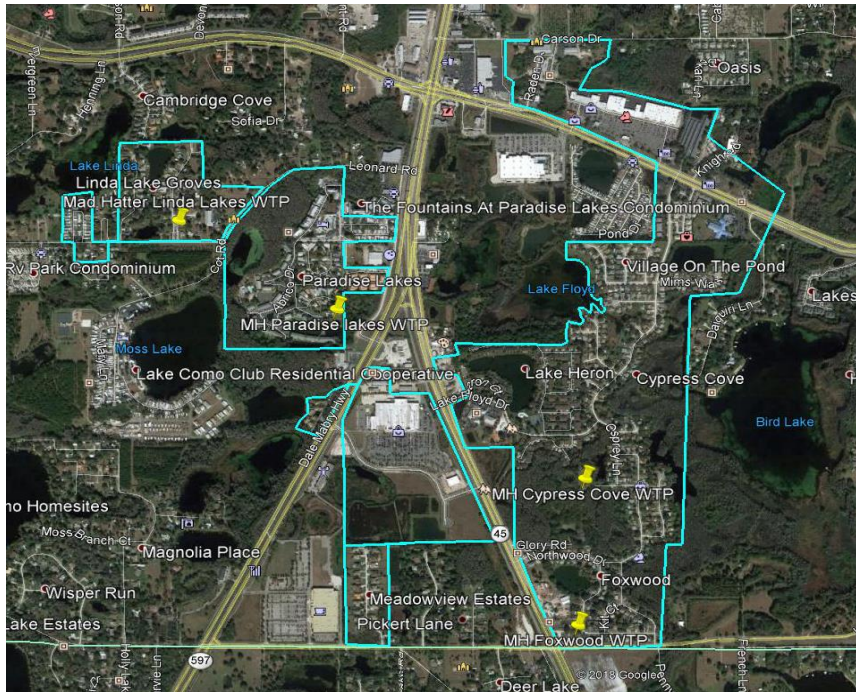
## Wastewater System Components (CARPENTER'S RUN, and TURTLE LAKES a.k.a. TERRA BELLA)

Carpenter's Run and Terra Bella have no wastewater treatment plants. The FGUA collection system is connected to Pasco County. The collection system consists of approximately the following:

- Ten (10) Lift stations with two sewage pumps each
  - Four hundred and eight (408) Manholes
  - 93,375 LF of gravity mains
  - 23,027 LF of 6-inch Force mains
  - 175,777 LF of Reclaimed water mains (currently delivering potable water for irrigation)
-

---

## WEST MAD HATTER SERVICE AREA



### WEST MAD HATTER Water System Summary

#### Water System Components (CYPRESS COVE)

The system is located at 1140 County Line Road, Land O' Lakes, Florida.

CYPRESS COVE is a water-only system. The water treatment plant treatment capacity is permitted for 2,114,000 GPD on an average annual daily flow (AADF) basis. The WTP is limited by the amount of ground water that can be withdrawn as permitted by SWFWMD. The water treatment plant is Category V Class C plant.

Combined supply, treatment and distribution system consists of approximately the following:

- Two (2) public potable water supply wells
  - Two (2) 40 HP Vertical Turbine and 40 HP Submersible public supply pumps
  - Two (2) Hydro-pneumatic tanks, 10,000 gallons each
  - Two (2) Flow meters at each well
  - One (1) Generator, Diesel fuel
  - Twenty- Six (26) fire hydrants
  - Phosphate treatment for corrosion control
  - Chlorination system for disinfection
-

---

## Water System Components (FOXWOOD)

The system is located at 21514 Lagoon Drive, Land O' Lakes, Florida.

FOXWOOD is water-only system. The water treatment plant treatment capacity is permitted for 748,000 GPD on an average annual daily flow (AADF) basis. The WTP is limited by the amount of ground water that can be withdrawn as permitted by SWFWMD. The water treatment plant is a Category V Class C plant.

Combined supply, treatment and distribution system consists of approximately the following:

- One (1) public potable water supply well
- One (1) 30 HP Vertical Turbine public supply pump
- One (1) Hydro-pneumatic tank 10,000 gallons
- One (1) Flow meter at well
- Thirty-Seven (37) fire hydrants
- Phosphate treatment for corrosion control
- Chlorination system for disinfection

CYPRESS COVE and FOXWOOD have no wastewater treatment plants. The collection system is connected to Pasco County.

The collection system consists of approximately the following:

- Six (6) Lift stations with two sewage pumps each
- One hundred and thirty-six (136) Manholes
- 26,775 LF of gravity mains
- 2,417 LF of 6-inch Force Mains

## Water System Components (PARADISE LAKES)

The system is located at 2001 Brinson Road, Lutz, Florida.

PARADISE LAKES is water-only system. The water treatment plant treatment capacity is permitted for 390,000 GPD on an average annual daily flow (AADF) basis. The WTP is limited by the amount of ground water that can be withdrawn as permitted by SWFWMD. The water treatment plant is a Category V Class C plant.

Combined supply, treatment and distribution system consists of approximately the following:

- One (1) public potable water supply well
- One (1) 15 HP Submersible public supply pump
- One (1) Hydro-pneumatic tank 10,000 gallons
- One (1) Flow meter at well
- Nine (9) fire hydrants
- Chlorination system for disinfection

The water system has an emergency interconnect to FOXWOOD WTP.

## Wastewater System Components (PARADISE LAKES)

PARADISE LAKES has no wastewater treatment plant. The collection system is connected to Pasco County. The collection system consists of approximately the following:

---

- 
- Five (5) Lift stations with two sewage pumps each
  - Forty- four (44) Manholes
  - 8,103 LF of gravity mains
  - 2,231 LF of 6-inch Force Mains

### Water System Components (LINDA LAKES)

The system is located northwest of Leonard Road, approx. 0.6 miles off SR 41 in Lutz, Florida.

LINDA LAKES is a water and wastewater system.

The water treatment plant is located at 2206 Karen Drive, Lutz, Florida.

The treatment capacity is permitted for 390,000 GPD on an average annual daily flow (AADF) basis. The WTP is limited by the amount of ground water that can be withdrawn as permitted by SWFWMD. The water treatment plant is a Category V Class C plant.

Combined supply, treatment and distribution system consists of approximately the following:

- One (1) public potable water supply well
- One (1) 5 HP Submersible public supply pump
- Two (2) Booster Pumps
- Two (2) Ground Storage tanks, 6,500 gallons each
- One (1) Hydro-pneumatic tank, 5,000 gallons
- One (1) Flow meter at well
- Two (2) fire hydrants
- Ortho Phosphate system for corrosion control
- Chlorination system for disinfection

### Wastewater System Components (LINDA LAKES)

The wastewater treatment plant is located at 2202 Karen Drive, Lutz, Florida.

The wastewater treatment plant treatment capacity is permitted for 390,000 GPD on an average annual daily flow (AADF) basis.

Combined treatment and collection system consist of approximately the following:

- One (1) 5 HP Roots Blower
  - One (1) Digester
  - Two (2) Chlorine Contact Chambers
  - One (1) Headworks
  - One (1) Flow meter at LS 19
  - One (1) Bar Screen
  - Four (4) Aeration chambers
  - One (1) Clarifier
  - Two (2) Percolation Ponds
  - 3,673 LF of 8-inch Gravity mains
  - One (1) Lift station with two pumps
  - Two (2) Variable Frequency Drives
  - Twenty-one (21) Manholes
-