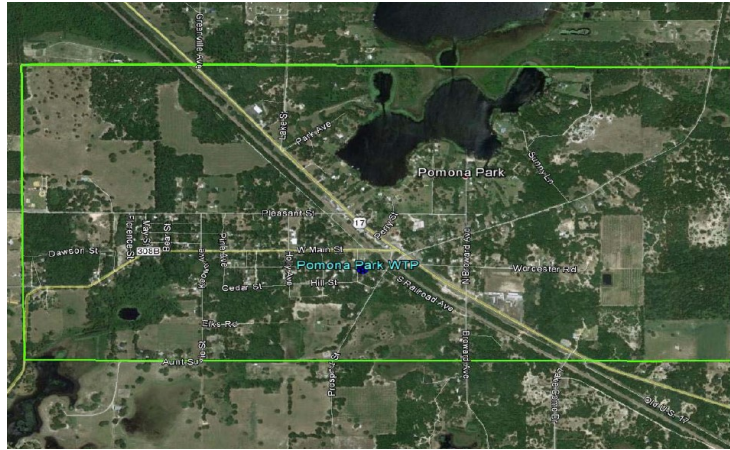


---

## POMONA PARK SERVICE AREA



**Pomona Park** system is located off CR 17 (CR15) approximately (6) six miles South of Satsuma. The FGUA serves a community, consisting of approximately 160 water customers, spread evenly on the east and west sides of SR 17.

### Water System Summary

The water system has one water treatment facility. This is a Category V Class D Facility with a permitted capacity of 170,000 Gallons per Day. The facility has two raw water submersible pumps wells which pump to a 5,000 gallon hydro-pneumatic (HPN) tank.

### Water System Components

The water treatment plant consists of the following:

- One (1) 5,000 gallon Hydro-pneumatic tank
  - Two (2) Submersible Well Pumps
  - One (1) Tank Mounted Air Compressor with controls
  - Chlorine disinfection system for each well pump
  - POLYPHOSPHATE Iron Sequestering system
  - One 30 KW Emergency Generator
-