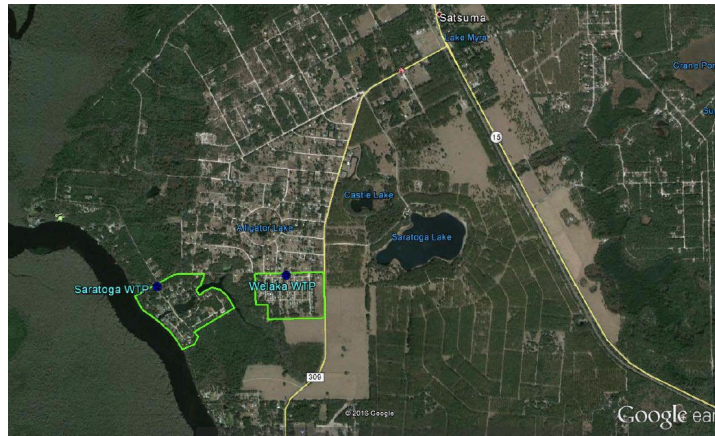


---

## SARATOGA HARBOR & WELAKA MHP SERVICE AREA



**Saratoga Harbor & Welaka MHP** systems are both water only systems. Saratoga Harbor is interconnected to the Welaka MHP system. Saratoga Harbor is located at the corner of Gibbs Avenue and Hamilton Road, approximately two (2) miles southwest of Satsuma. The FGUA serves a community of approximately 60 customers. In the Welaka MHP, the FGUA serves approximately 99 water customers.

### Water System Summary - Saratoga Harbor

Saratoga Harbor has one water treatment plant (WTP) facility. This is a Category V Class D Facility with a permitted capacity of 158,000 gallons per day. The facility has one (1) well with two (2) raw water pumps which pump into a 40,000 gallon steel Ground Storage Tank (GST) through the aerator mounted on top of the GST.

### Water System Components

The water treatment plant consists of the following:

- One (1) 40,000 Gallon (Steel) GST with an aerator
- One (1) 5,000 gallon Hydro-pneumatic tank
- One (1) supply well with two (2) centrifugal well pumps
- One (1) tank-mounted air compressor with controls
- Liquid chlorine disinfection system

### Water System Summary—Welaka MHP

Welaka MHP water treatment facilities are interconnected with Saratoga Harbor and report their water use jointly to the FDEP. Based on the quantity of withdrawn and the capacity of the facility, a St. John's River Water Management District consumptive use permit is not required. The treatment plant is a Category V, Class D facility located on Hamilton Road, ¼ miles west of CR 309 and 2 miles southwest of Satsuma. The design capacity is 59,220 gallons per day.

### Water System Components

Combined treatment and distribution system consists of approximately the following:

- One (1) raw water supply well with a 5.0 HP submersible pump
  - Liquid chlorination for disinfection
  - One (1) 3,000 gallons HPN tank
  - 12,506 LF of 2-inch pipe
  - 6,510 LF of 3-inch pipe
  - 2,735 LF of 4-inch pipe
  - 3,492 LF of 6-inch pipe
  - One (1) 4-inch compound meter
  - 0 fire hydrants
-