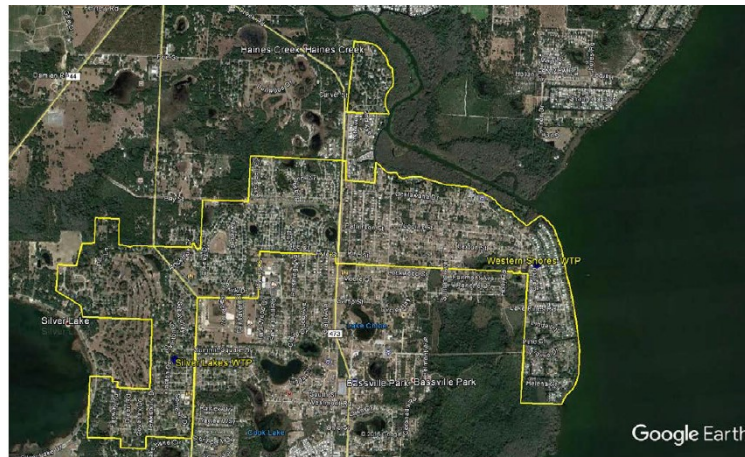

SILVER LAKE ESTATES & WESTERN SHORES SERVICE AREA



Silver Lake Estates & Western Shores is a water only system. This system is located 0.5 mile north of the intersection of US 441 and Radio Road, approximately 6.0 mile northeast of the City of Leesburg. The Silver Lake Estates WTP is located at 10438 Barrington Court, Leesburg, FL. The Western Shores WTP is located at 34210 Carl Road, Leesburg, FL. The FGUA serves approximately 1,102 water customers within this system.

Water System Summary

Silver Lake Estates and Western Shores are interconnected systems. The Silver Lake Estates & Western Shores WTP's are Category V, Class C Facilities. Both water treatment plants are permitted in combination with a total rated capacity of 0.629 MGD (629,000 GPD).

Water System Components

Combined distribution system consists of approximately-

- 6,425 LF of 12-inch pipe
- 1,065 LF of 10-inch pipe
- 26,385 LF of 8-inch pipe
- 10,380 LF of 6-inch pipe
- 38,210 LF of 4-inch pipe
- 1,745 LF of 3-inch pipe
- 17,540 LF of 2-inch pipe
- 600 LF of 1-inch pipe
- 65 fire hydrants

Silver Lake Estates Plant-

- One (1) 120/240 Volt, 250 KW Caterpillar Diesel generator set
- Two (2) public supply wells, both with Goulds 50 HP vertical turbine well pumps
- Four (4) vertical turbine high service pumps
- Water is disinfected by liquid chlorination before it enters the two 25,000 gallon ground storage tanks

Western Shores Plant-

- One (1) public supply well, with a Goulds 40 HP vertical turbine well pump
 - Water is disinfected by liquid chlorination before it enters the 15,000 gallon hydropneumatics tank
-