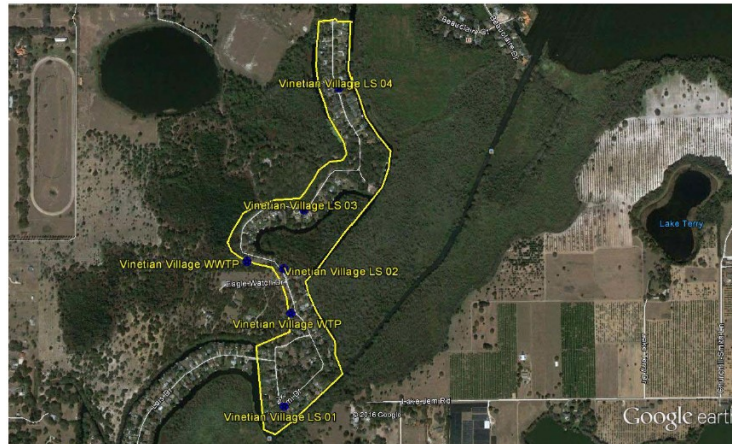


---

## VENETIAN VILLAGE SERVICE AREA



**Venetian Village** is a water and wastewater system. This system is located on Tammi Drive between Eagle Watch Drive and Lois Drive, approx. four (4) miles southeast of the city of Tavares, Florida. The Venetian Village WTP is located at 28217 Tammi Drive, and the WWTP is located at 28339 Tammi Drive, Tavares, FL. FGUA serves approximately 270 water and wastewater customers.

### Water System Summary

The Venetian Village WTP is a Category V Class D Facility. The Venetian Village plant has a design capacity of 216,000 GPD.

### Water System Components

Distribution system has approximately-

- 84 LF of 6 inch pipe
- 10,356 LF of 4 inch pipe
- 5,166 LF of 2 inch pipe
- 0 fire hydrants.
- One (1) 120/240 Volt 35 KW Katolight Lynx Propane generator set
- Two (2) public supply wells with one (1) VT well pump and one (1) submersible well pump
- Water is disinfected by liquid chlorination before it enters the hydro-pneumatic tank
- One (1) 5,000 gallon hydro-pneumatic tank.

### Wastewater System Summary

The Venetian Village WWTP is a Category III Class C Facility. The Venetian Village plant is a concrete 'package plant' with a permitted capacity of 36,000 GPD. Treated effluent is discharged in a rapid infiltration system with two basins.

### Wastewater System Components

- Three (3) aeration tanks
- One (1) clarifier
- One (1) digester
- One (1) chlorine contact chamber
- Two (2) blowers

The collection system has approximately -

- 7,410 LF of 8 inch Gravity Main
  - 4,225 LF of 4 inch PVC Force main
  - Four (4) lift stations
-