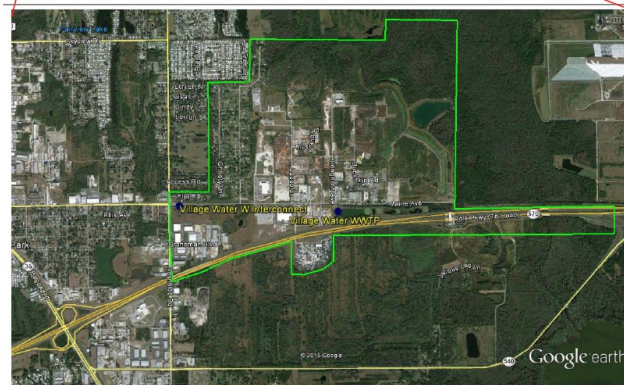

VILLAGE WATER SERVICE AREA



Village Water is located, approximately three-quarters (3/4) of a mile North East of the junction of Polk Parkway and SR 98 south of I – 4. The FGUA provides both water and sewer service to approximately 200 customers.

Water System Summary

The Village Water, water system is a consecutive system that purchases all of its water from the City of Lakeland. The system has no water treatment facility.

Water System Components

The distribution system consists of -

- Approximately 53,500 LF of (0.75 inch to 8 inch) pipes
- No fire hydrants

Wastewater System Summary

The Wastewater system has one Wastewater treatment facility. This is a Category III, Class C facility with extended aeration system with a treatment capacity of 75,000 gallons per day (GPD). The facility is permitted based on a Three-Month Rolling Average Daily Flow (3MRADF) The 3MRADF is limited to 45,000 GPD due to effluent disposal limitations at the site.

Wastewater System Components

- One (1) Headworks with influent Bar Screen
 - One (1) 40,000 gallon Equalization Tank
 - One (1) Splitter box
 - Fifteen (15) 5,000 gallons each Aeration tanks.
 - Three (3) 5,200 gallon clarifiers
 - Three (3) 3,900 gallon digesters
 - One (1) 5,000 gallon Chlorine Contact Chamber
 - Liquid Chlorination for disinfection
 - Three (3) blowers
 - Two (2) rapid infiltration basins
-