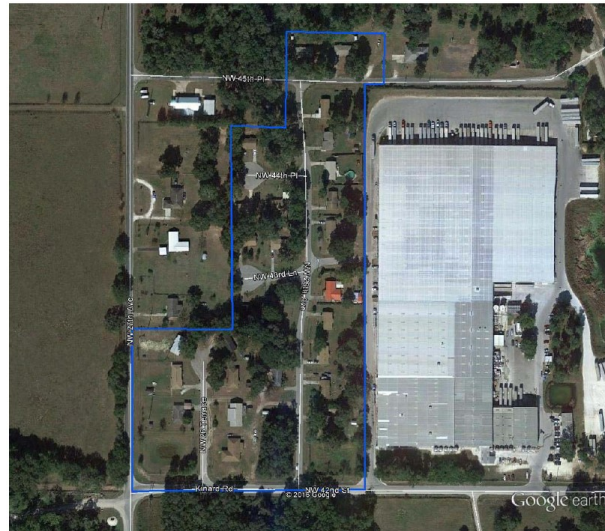

WESTVIEW SERVICE AREA



Westview is a water only system, located at NW 45th Place east of NW 27th Avenue, approximately 3.5 miles northwest of Ocala. The Westview WTP address is 2468 NW 45th Place, Ocala, FL. FGUA serves approximately 29 water customers.

Water System Summary

The Westview WTP is a Category V Class D Facility. The plant has a maximum design capacity of 18.25 million gallons per year (0.05 MGD). The plant is permitted by The Florida DEP. Based on the quantity of ground water withdrawn and the capacity, a St. Johns River Water Management District consumptive use permit is not required.

Water System Components

Distribution system has approximately-

- 2,200 LF of 4 inch PVC pipe
 - 980 LF of 2 inch PVC pipe
 - 0 fire hydrants.
 - One (1) 120/240 Volt 18 KW Elliot Propane generator set
 - One (1) public supply well with submersible well pump
 - Water is disinfected by liquid chlorination before it enters the hydro-pneumatic tank
 - One (1) 2,000 gallon hydro-pneumatic tank.
 - One (1) wood framed building with asphalt shingled roof which houses the electricals.
 - One (1) 23 CFM 135 psi compressor
-