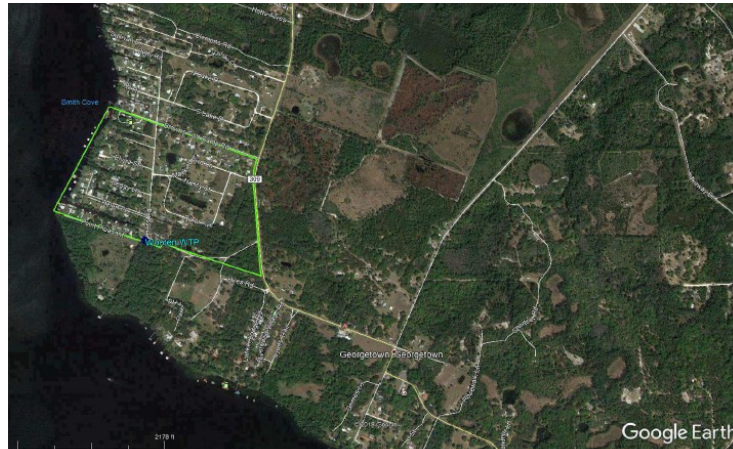

WOOTEN MHP SERVICE AREA



WOOTEN'S MHP is a water only system, located at the Hess Road/Pt. Pleasant Rd intersection, in Georgetown, FL, approximately 2 miles northwest of Palatka. The FGUA serves 31 water customers.

Water System Summary

The water treatment plant is a Category IV Class D facility and has permitted capacity of 36,000 GPD on an annual average daily flow basis permitted by the Florida Department of Environmental Protection (FDEP). Based on the quantity of ground water withdrawn and the capacity of the facility, a St. John's River Water Management District consumptive use permit is not required. The WTP uses Hypo-chlorination with aeration for water treatment.

Water System Components

Combined treatment and distribution system consist of approximately the following:

- One (1) public supply well, with 1.5 HP horizontal self-priming pump
 - Liquid chlorination for disinfection
 - 3,668 LF of 2-inch pipe
 - One (1) 1,000 gallons ground storage tank (GST)
 - One (1) Aerator on top of the GST
 - One (1) 500 Gallons hydro-pneumatic tank
 - Two (2) High Service 5.0 HP Pumps
-